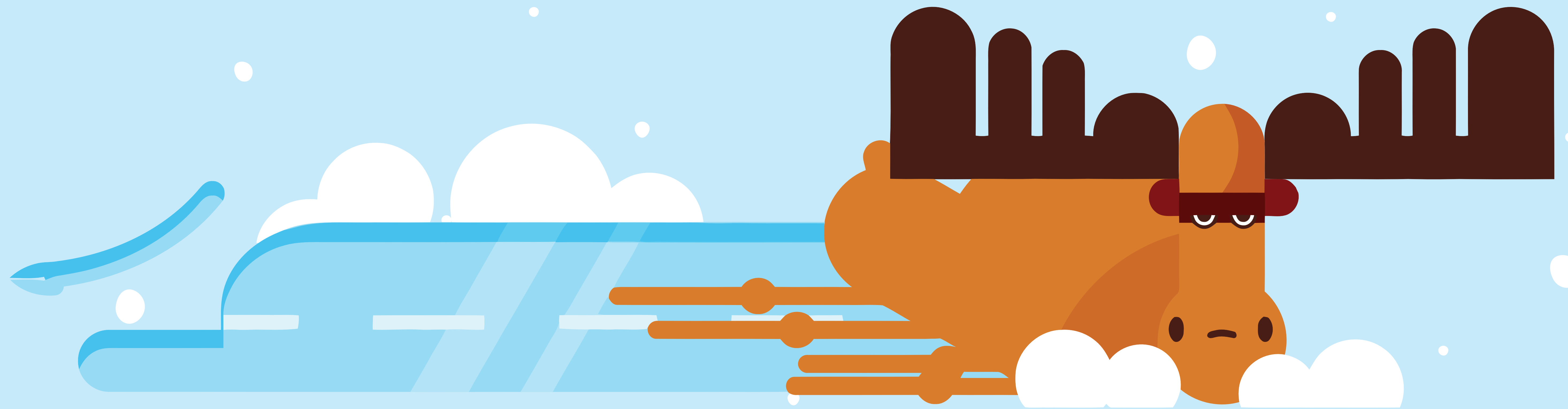


DRIVE SLOW IN THE SNOW

Drive according to weather conditions, not the speed limit.



SNOW HOW.CA



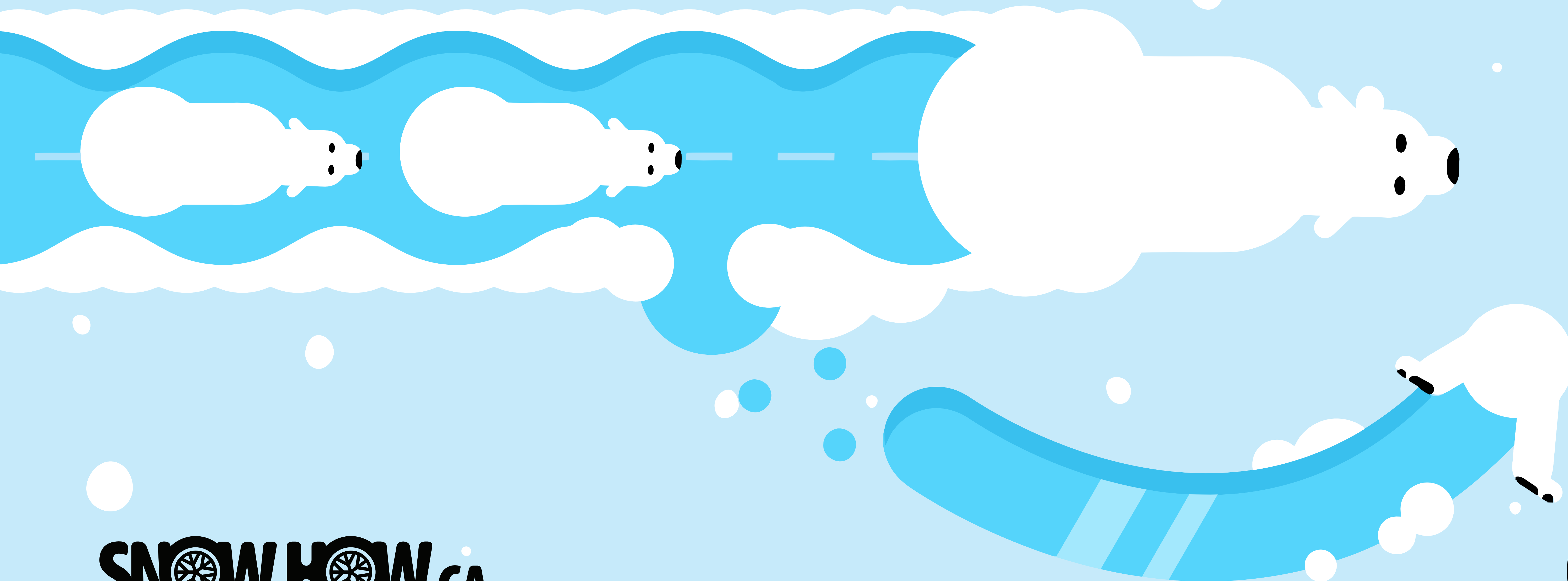
BE NICE DRIVING ON ICE

Stopping distance on ice is double that of a dry road.



IT'S NOT A RACE GIVE PLOWS SPACE

They can't see you and you can't see the road ahead.



SNOWHOW.CA

